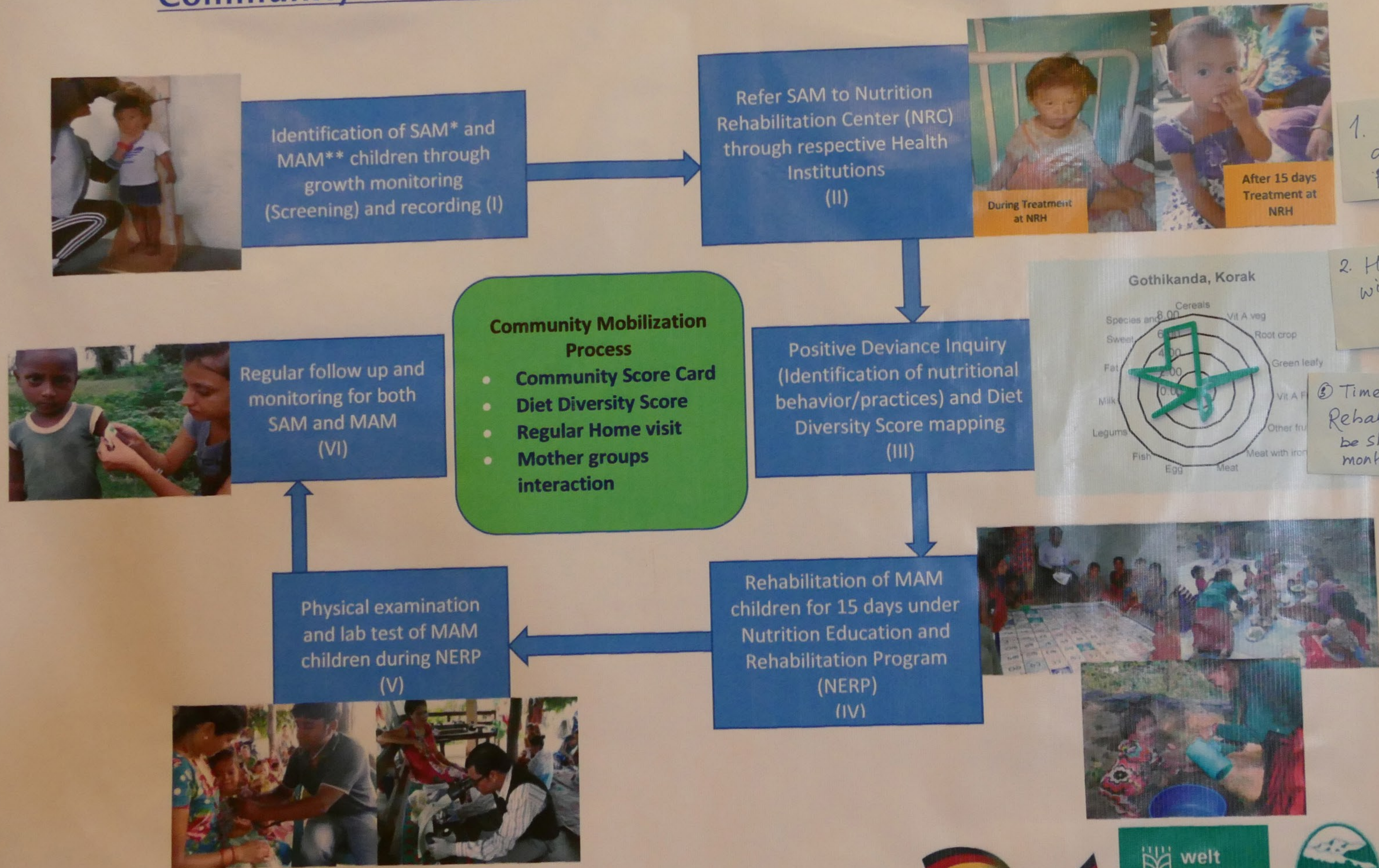


Community Based Nutrition Intervention Cycle (CBNIC)



1. What about the adaptation of the process by Govt.?

2. How do you link with Govt. programs?

③ Time ^{interval} ~~frame~~ for MAM Rehabilitation need to be shorten from 6 months to 3 or 4 months.

SAM*= Sever Acute Malnutrition
MAM**= Moderate Acute Malnutrition

